



Bob's Choices





2005 MINI Cooper S Convertible

Base MSRP*	\$24,400
Destination & Handling	\$550
PAINT	
British Racing Green Body Color	\$420
Black Top	STD
Body Color Mirrors	STD
PACKAGE	
Cold Weather Package	\$300
Heated Front Seats	
Heated Side Mirrors and Washer Jets	
PERFORMANCE	
Sport Suspension	STD
16" V-Spokes (All-Season)	\$0
COCKPIT	
Sport Seats	STD
Leatherette: Black	STD
Int. Surface Alloy Patina	STD
Park Distance Control	STD
3-Spoke Leather Steering Wheel	STD
6-spkr AM/FM CD Player	STD
TOTAL MSRP AS CONFIGURED*	\$25,670
ACCESSORY**	
Black Rubber Floor Mat (front) (installation not incl.)	\$48
Black Rubber Floor Mat (back) (installation not incl.)	\$30
Auxiliary Audio Input (installation not incl.)	\$40
TOTAL ACCESSORIES **	\$118
TOTAL MSRP AS CONFIGURED*	\$25,670
TOTAL COMBINED	\$25,788

The Build Your Own MINI experience is an ongoing development and expansion. Actual prices and available options are subject to change and may vary from the Summary listing. Please contact us with any questions. We welcome your comments.

*Total MSRP excludes all taxes, title/documentary fees, registration, tags, MINI preparation charges, MINI Dealer installed options, insurance, certificate of compliance or non-compliance fees, and finance charges. Prices may vary by MINI Dealership.

**All prices are suggested retail prices and are subject to change. Actual prices may vary and depend upon MINI Dealer. Prices do not include installation or painting, if required. Prices exclude taxes and/or shipping and handling charges. Check with your authorized MINI Dealer for complete accuracy of information and availability.

All the illustrations and specifications contained in this web site are based on the latest product information available at the time of posting. MINI, a division of BMW of North America, LLC. reserves the right to make changes at any time, without notice, in

colors, materials, and equipment.

THE WHOLE ENCHILADA

A FULL LIST OF FEATURES, SPECS, AND PRICES.



NA = Not Available
NC = No Charge option
DA = Dealer Accessory

S = Standard
\$ = Option
^ = Also in Combo

SP = Combo #1 - Premium
PP = Combo #2 - Sport
CWP = Combo #3 - Cold Weather

Base MSRP* (includes D&H)	2005 MINI COOPER \$16,999	2005 MINI COOPER CONV. \$21,500	2005 MINI COOPER S \$20,449	2005 MINI COOPER S CONV. \$24,950
PACKAGES				
Combo #1: Premium	\$1,350	\$1,350	\$1,350	\$1,350
	Multifunction leather wheel	Multifunction leather wheel	Multifunction leather wheel	Multifunction leather wheel
	Cruise control	Cruise control	Cruise control	Cruise control
	Dual pane panoramic sunroof	Chrome line interior	Dual pane panoramic sunroof	Chrome line interior
	Auto AC w/active carbon air filter	Auto AC w/active carbon air filter	Auto AC w/active carbon air filter	Auto AC w/active carbon air filter
	On-board computer	On-board computer	On-board computer	On-board computer
		Harman Kardon Stereo		Harman Kardon Stereo
Combo #2: Sport	\$1,350	\$1,350	\$1,350	\$1,350
	Dynamic Stability Control (DSC)	Dynamic Stability Control (DSC)	Dynamic Stability Control (DSC)	Dynamic Stability Control (DSC)
	Rear Spoiler	Bonnet stripes (if you want them)	Bonnet stripes (if you want them)	Bonnet stripes (if you want them)
	16" Alloy 5-star wheels with 195/55R16 perf. run flat tires	16" Alloy 5-star wheels with 195/55R16 perf. run flat tires	17" Alloy 5-lite wheels with 205/45 R17 perf. or all-season run flat tires	17" Alloy 5-spoke bullet wheels with 205/45 R17 perf. or all-season run flat tires
	Sport seats	Sport seats	Xenon Headlamps w/powerwashers	Xenon Headlamps w/powerwashers
	Front fog lamps	Front fog lamps	Front fog lamps	Front fog lamps
Combo #3: Cold Weather	\$300	\$300	\$300	\$300
	Heated washer jets	Heated washer jets	Heated washer jets	Heated washer jets
	Heated mirrors	Heated mirrors	Heated mirrors	Heated mirrors
	Heated seats	Heated seats	Heated seats	Heated seats

*Each new MINI comes with a Manufacturer's Suggested Retail Price (MSRP) listed on its "window sticker." MSRP includes destination and handling charge of \$550 and excludes title, license, registration, taxes and options. Actual price is determined by your authorized MINI Dealer.

INDIVIDUAL FEATURES AND OPTIONS

Performance & Efficiency	MINI Cooper	MINI Cooper Convertible	MINI Cooper S	MINI Cooper S Convertible
1.6 - liter overhead cam (OHC), 16 - valve incline 4 - cyl. engine (115 hp)	S	S	NA	NA
Supercharged, intercooled 1.6-liter overhead cam (OHC), 16-valve inline 4-cylinder engine (168 hp)	NA	NA	S	S
Drive-by-Wire – Electronic throttle control	S	S	S	S
5-speed manual Getrag transmission	S	S	NA	NA
6-speed manual Getrag transmission	NA	NA	S	S
CVT (Continuously-Variable automatic Transmission) with lever-mounted 6-speed Steptronic mode	\$1300	\$1300	NA	NA
Wide bulldog-stance	S	S	S	S
Hood scoop Air-intake	NA	NA	S	S
John Cooper Works Tuning Kit	NA	NA	DA	DA

Handling, Ride & Braking	MINI Cooper	MINI Cooper Convertible	MINI Cooper S	MINI Cooper S Convertible
Ultra-rigid body frame construction	S	S	S	S
MacPherson strut front suspension	S	S	S	S
Multi-link rear suspension	S	S	S	S
Equal-length drive shafts	S	S	S	S
Dual-cone synchronizers	S	S	S	S
Electro-hydraulic, engine-speed-sensitive, variable-assisted power steering	S	S	S	S
4-wheel anti-lock disc brakes (front vented/rear solid)	S	S	S	S
Electronic Brake Distribution	S	S	S	S
Corner Brake Control	S	S	S	S
All-Season Traction Control (ASC)	NA	NA	S	S
Dynamic Stability Control (DSC) (incorporates ASC functions)	\$500^	\$500^	\$500^	\$500^
Sport Suspension w/ front and rear stabilizer bars	S	\$500	NA	S
Sport Suspension Plus w/ stiffer front and rear stabilizer bars	\$500	NA	S	NA

Exterior	MINI Cooper	MINI Cooper Convertible	MINI Cooper S	MINI Cooper S Convertible
15" alloy wheels, 175/65R-15 all-season tires, 7-hole design	S	NC	NA	NA
15" alloy wheels, 175/65R-15 performance tires, 5-star rocket design	NA	S	NA	NA
16" alloy wheels, 195/55R-16 performance run flat tires, 5-star design	\$600^	\$600^	NA	NA
16" alloy wheels, 195/55R-16 all-season run flat tires, V-spoke design	NA	NA	S	NC
16" alloy wheels, 195/55R-16 performance tires, 7-fin spoke design	NA	NA	NA	S
17" alloy wheels, 205/45R-17 perf. or all season run flat tires, 5-lite design	DA	DA	\$600^	\$600^
17" alloy wheels, 205/45R-17 performance tires, 5-spoke bullet design	NA	NA	NA	\$600^
Alloy wheels – all available in white	NC	NC	NC	NC
Space saver wheel and tire	S	S	NA	NA
Xenon headlights with retractable, high-intensity power wash and auto-leveling feature	\$550	\$550	\$550^	\$550^
Front fog lamps (halogen free-form)	\$140^	\$140^	\$140^	\$140^
Sculpted bonnet	S	S	S	S
Chrome grill and surround	S	S	NA	NA
Body-colored bumpers	S	S	NA	NA
Chrome line exterior (including Mirror Caps)	\$250	\$250	\$250	\$250



Exterior continued	MINI Cooper	MINI Cooper Convertible	MINI Cooper S	MINI Cooper S Convertible
Chrome mirror caps (and chrome hinges for Convertible)	\$120	\$120	\$120	\$120
Body-colored grill	NA	NA	S	S
Body-colored sport bumpers	NA	NA	S	S
Body-colored roof	NC	NA	NC	NA
Contrasting roof and mirror caps (available black or white)	S	NA	S	NA
Rear spoiler	\$150^	NA	S	NA
Soft-top convertible roof (in black, dark green or blue)	NA	S	NA	S
Bonnet stripes (white or black)	DA	DA	\$100^	\$100^
Single chrome tailpipe	S	S	NA	NA
Center-mounted dual-tailpipes	NA	NA	S	S
Chrome fuel filler cap cover	NA	NA	S	NA
Glass band "greenhouse" windows	S	NA	S	NA
Open-wide front doors	S	S	S	S
Open-wide hatch	S	NA	S	NA
Easy load boot	NA	S	NA	S
Metallic paint	\$420	\$420	\$420	\$420

Interior Seating & Trim	MINI Cooper	MINI Cooper Convertible	MINI Cooper S	MINI Cooper S Convertible
6-way adjustable seats (manual) w/ height adjustment	S	S	NA	NA
Sport seats - 6-way adjustable (manual) w/ height adjustment	\$270^	\$270^	S	S
2-way adjustable lumbar support (only with leather and cloth/leather upholstery)	O	O	O	O
Height adjustable headrests	S	S	S	S
Seatback easy-entry feature	S	S	S	S
Power exterior mirror control	S	S	S	S
LED waterfall lighting	S	S	S	S
Leatherette upholstery	S	S	S	S
Cloth upholstery	NC	NC	NC	NC
Cloth/leather combo upholstery	\$800	\$800	\$800	\$800
Leather upholstery with leather steering wheel and gear shift	\$1,300	\$1,300	\$1,300	\$1,300
Heated front seats	\$270^	\$270^	\$270^	\$270^
3-spoke leather steering wheel	S	S	S	S
3-spoke multi-function leather steering wheel with fingertip cruise control and audio controls	\$250	\$250	\$250	\$250
Tilt steering wheel column	S	S	S	S
Silver high-gloss trim	S	S	NC	NC
Alloy patina trim	NC	NC	S	S
Anthracite trim	NC	NC	NC	NC
Body color trim	NA	NC	NC	NC
Aluminum alloy foot pedals	NA	NA	S	S
Chrome line interior trim	\$200	\$200	\$200	\$200

Instrumentation & Controls	MINI Cooper	MINI Cooper Convertible	MINI Cooper S	MINI Cooper S Convertible
Center-mounted speedometer	S	S	S	S
Steering column-mounted tachometer	S	S	S	S
Service interval indicator with miles-to-service readout	S	S	S	S
Check control vehicle monitor system with pictogram display	S	S	S	S
On-board computer indicating average fuel/speed, outside temperature, trip computer and range	\$200^	\$200^	\$200^	\$200^
On-board navigation system with 16:9 screen w/ on-board computer (speedometer moves to steering column)	\$1,700	\$1,700	\$1,700	\$1,700
Cockpit Chrono Pack	\$250	\$250	\$250	\$250

Comfort & Convenience	MINI Cooper	MINI Cooper Convertible	MINI Cooper S	MINI Cooper S Convertible
Toggle switch instrument controls	S	S	S	S
Remote entry, including 2-step unlocking and remote trunk release	S	S	S	S
Air-conditioning with pollen micro-filter and air-recirculation	S	S	S	S
Automatic air-conditioning with active carbon filter and air-recirculation	\$300^	\$300^	\$300^	\$300^
Climate controlled glovebox	S	S	S	S
Park Distance Control – rear only	\$350	S	\$350	S
Glass rear window w/defroster	S	S	S	S
Glass-sensitive intermittent windshield wipers	S	S	S	S
Rear windshield wiper	S	NA	S	NA
Rain-sensing wipers and auto-dimming rear-view mirror	\$150^	\$150^	\$150^	\$150^
Second remote key	S	S	S	S
Power front windows with "one-touch" down operation	S	S	S	S
Dual-pane panoramic power sunroof	\$850^	NA	\$850^	NA
Automatic cloth sunroof	NA	S	NA	S
Cruise control (with leather multi-function steering wheel)	\$350^	\$350^	\$350^	\$350^
Map-reading and footwell lights	S	S	S	S
50/50 Split fold-down rear seats for expandable cargo space	S	S	S	S
3 cupholders – 2 front/1 rear	S	S	S	S
3 sun visors (2 with illuminated vanity mirrors)	S	S	S	S
Electronic digital clock	S	S	S	S
Plug and play electronics system	S	S	S	S
Auto-sealing door windows	S	S	S	S
"One-touch" window/roof control using key	S	S	S	S
12V Power outlet in the boot and cockpit	S	S	S	S
Universal garage door opener	\$200	\$200	\$200	\$200
Side sun visor	S	S	S	S
Grab handles in headliner	S	NA	S	NA

Audio System	MINI Cooper	MINI Cooper Convertible	MINI Cooper S	MINI Cooper S Convertible
6 Speakers with AM/FM & CD	S	S	S	S
6 Speakers with AM/FM & Cassette	NC	NC	NC	NC
Harman Kardon CD audio system w/ 8 upgraded speakers, upgraded amplification, digital sound processing (DSP) and multiple driver-spatial acoustic settings	\$550	\$550	\$550	\$550
SIRIUS Satellite Radio (price doesn't include installation or subscription fees)	\$499	\$499	\$499	\$499



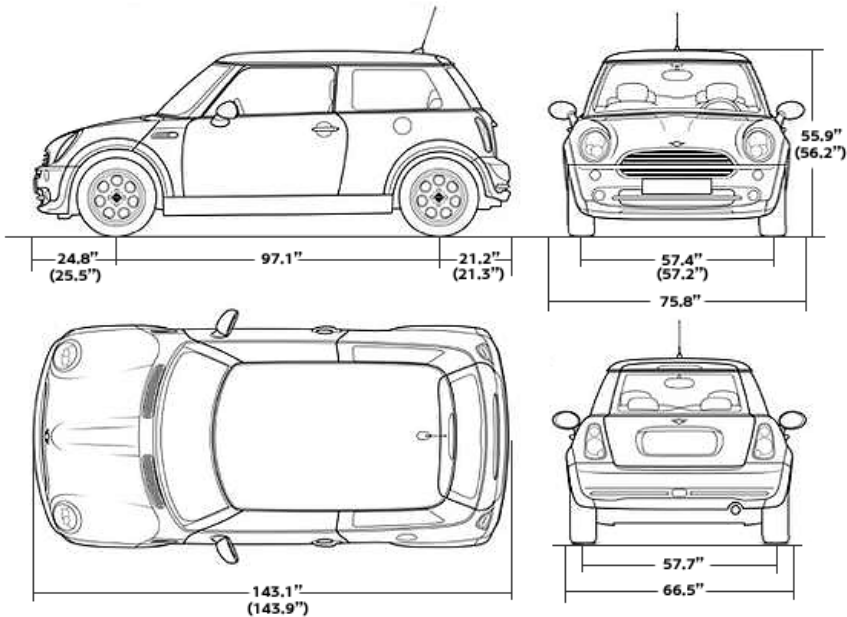
Safety & Security	MINI Cooper	MINI Cooper Convertible	MINI Cooper S	MINI Cooper S Convertible
Ultra-rigid body frame construction	S	S	S	S
Anti-lock braking system (ABS)	S	S	S	S
Corner Brake Control (CBC)	S	S	S	S
Electronic Brake Distribution (EBD)	S	S	S	S
Flat Tire Monitor	S	S	S	S
Driver and front passenger airbags – supplemental restraint system (SRS) with "smart" dual-threshold, dual-stage deployment and sensor to help prevent unnecessary passenger airbag deployment	S	S	S	S
Driver and front passenger seat-mounted, side-impact airbags (thorax protective bags on convertible)	S	S	S	S
Advanced Head Protection System II (AHPSII)	S	NA	S	NA
Side-impact door beams with interlocking anchoring system	S	S	S	S
Pre-wired for alarm system installation	S	S	S	S
Central locking system with center toggle switch and 2-step unlocking	S	S	S	S
Engine immobilizer with coded drive away protection	S	S	S	S
Remote keyless entry and "one-turn" window control	S	S	S	S
Height-adjustable front safety belts with automatic pretensioners & force limiters	S	S	S	S
ISOFIX child restraint seat anchorages (LATCH System)	S	S	S	S
Crash sensor – automatically turns on hazard lights, interior lights, and unlocks doors w/ auto fuel cut-off triggered by airbag deployment	S	S	S	S
Battery misconnection alarm	S	S	S	S
Daytime running lights – programmed by MINI dealer	NC	NC	NC	NC
Reinforced rear seat rollbars	NA	S	NA	S

VEHICLE SPECIFICATIONS				
Engine	MINI Cooper	MINI Cooper Convertible	MINI Cooper S	MINI Cooper S Convertible
Liters/type	1.6/transverse 4-cyl.	1.6/transverse 4-cyl.	Supercharged 1.6/transverse 4-cyl.	Supercharged 1.6/transverse 4-cyl.
Bore/stroke, inch	3.03/3.38	3.03/3.38	3.03/3.38	3.03/3.38
Max. Horsepower, hp/rpm	115/6000	115/6000	168/6000	168/6000
*Max. Torque, lb-ft/rpm	111/4500	111/4500	162/4000	162/4000
Power to Weight Ratio, lbs./hp	21.9 (22.2 w/CVT)/1	21.9 (22.2 w/CVT)/1	16.4/1	16.4/1
Fuel Efficiency, city/highway	28/36 mpg (26/34 w/CVT)** (premium unleaded)	27/35 mpg (26/33 w/CVT)** (premium unleaded)	25/32 mpg** (premium unleaded)	25/32mpg** (premium unleaded)
Transmission				
Gear ratios	5-speed manual CVT	5-speed manual CVT	6-speed manual	6-speed manual
I/II	14.4/8.327 variable	14.4/8.327 variable	12.789/7.793	12.789/7.793
III/IV	5.476/4.105 variable	5.476/4.105 variable	5.651/4.615	5.651/4.615
V/VI	3.509/ variable	3.509/ variable	3.828/3.126	3.828/3.126
Final drive ratio	total trans ratio 5.76	total trans ratio 5.76	total trans ratio	total trans ratio
Reverse	14.065 3.82	14.065 3.82	11.944	11.944
Performance				
Drag coefficient	.35	.37	.36	.37
Top speed	124 mph (115 mph w/CVT)	121mph (115 mph w/CVT)	134 mph	134 mph
Acceleration – 0-60	8.5 seconds (manual only)	8.9 seconds (manual only)	6.8 seconds	7.0 seconds
Suspension				
Front:	MacPherson Strut	MacPherson Strut	MacPherson Strut	MacPherson Strut
Rear:	Multi-link	Multi-link	Multi-link	Multi-link
Tires, Wheels & Brakes				
Tire dimensions	175/65R-15 all season	175/65R-15 all season	195/55R-16 all season	195/55R-16 all season
Wheel dimensions	15" x 5.5"	15" x 5.5"	16" x 6.5"	16" x 6.5"
Material	Alloy	Alloy	Alloy	Alloy
Brake dimensions (diameter)				
Front – vented: inch	10.9"	10.9"	10.9"	10.9"
Rear – solid: inch	10.2"	10.2"	10.2"	10.2"
Weight				
Unladen weight, lbs.	2524 (2557 w/CVT)	2700 (2934 w/CVT)	2679	2844
Weight distribution, front/rear	60.3/39.7	61.2/38.8	60.9/39.1	59.3/40.7

** Preliminary data. EPA-estimated figures are for comparison purposes only. Your actual mileage may vary, depending on speed, weather and trip length; actual highway mileage will most likely be lower.

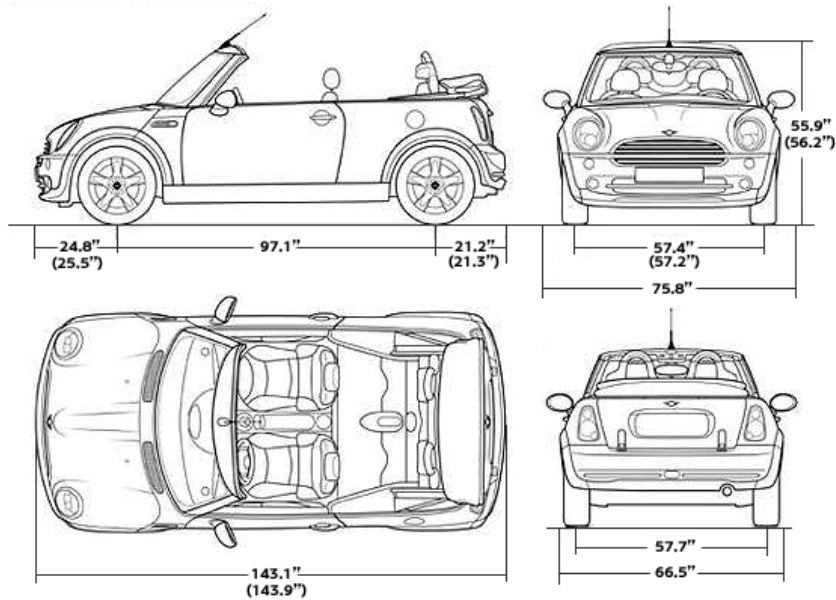
MINI COOPER AND MINI COOPER S DIMENSIONS

Where different, MINI Cooper S dimensions in parentheses.



MINI COOPER AND MINI COOPER S CONVERTIBLE DIMENSIONS

Where different, MINI Cooper S Convertible dimensions in parentheses.



WHERE DOES OPEN MOTORING COME FROM?

When automobiles were first created, the only kind of tops they had were flimsy canvas contraptions that had to be built on to the car. Nobody bothered to use them. And everybody engaged in open motoring. But soon cars evolved. While some people ran for hard tops, others stuck with soft tops. It was more daring. And brazen. It was a life full of adventure with a dash of imminent peril. If you ever watch old films, or even new films for that matter, you'll notice the best leading men always drive convertibles. This is not a coincidence.

GOGGLES:

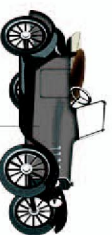
They were worn by fighter pilots and open motorists. Where the idea came from depends on who you ask, but considering that cars were invented first, it stands to reason that motorists came up with the idea. But pilots will probably never admit it.

MUSTACHE:

Some call this a "flavor saver" because it traps food particles and saves them to be enjoyed at a later time. In the early days of open motoring, this device would trap small particles of dust, oil and gasoline. Capturing the true essence of an open motorer.

MOTORCYCLE:

Early on, touring along twisty roads with the top down felt more like riding on a motorcycle with four wheels than riding in the comfort of a car. Things aren't that much different today. Except now your four-wheeled motorcycle comes with a CD player.



FORD MODEL T:

On October 1, 1908, the first Ford Model T was sold. At a cost of \$825, over 10,000 were bought. Though it was by no means the first automobile created, it was the first time average Americans could get their hands on a car. It was also the first time average Americans could open motor. Imagine what it must have been like for an entire country to get their driver's licenses in the same year.



LEATHER HEADGEAR:

Before there were hard plastics, carbon fibers and windshields, there was leather. It kept the hair out of the face and the wind out of the ears. It fit snug and tight. And when it got wet, it smelled bad. But this was what you wore. And you never heard anyone complain.

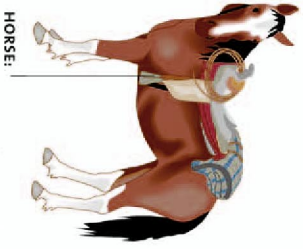
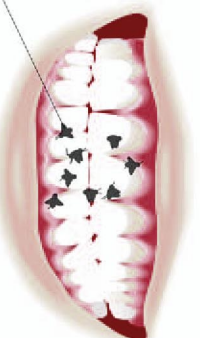


fig. 1

WHERE DOES OPEN MOTORING COME FROM?

BUGS:

Some insects are considered delicacies in many countries around the globe. So whenever you encounter such creatures, just think of them as an appetizer for your next meal. Then consider yourself worldly and exotic.



HORSE:

Since the beginning of time, man has traveled without a top. The idea of fitting some sort of canopy over a horse would have seemed ludicrous. It doesn't seem that smart in today's world either.

SCARF:

People learned early on that bundling up, not closing yourself in, was the right way to stay warm. Fact: Nothing looks more dashing than a scarf flapping in the wind. So it's no surprise scarves became commonplace around the necks of open motorers.

WINDING ROADS:

Some roads need to bend and curve because of the landscape they're built into. Others, like back roads, twist around soft patches of land and valleys. Either way, winding roads are like a church to open motorers. Amen.

